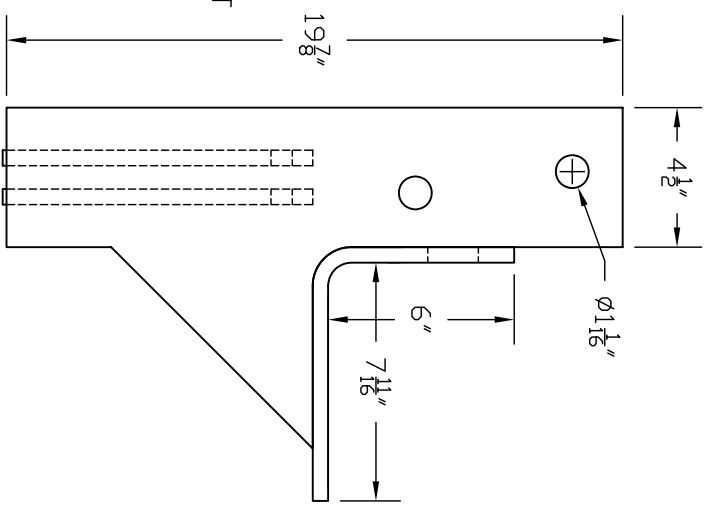
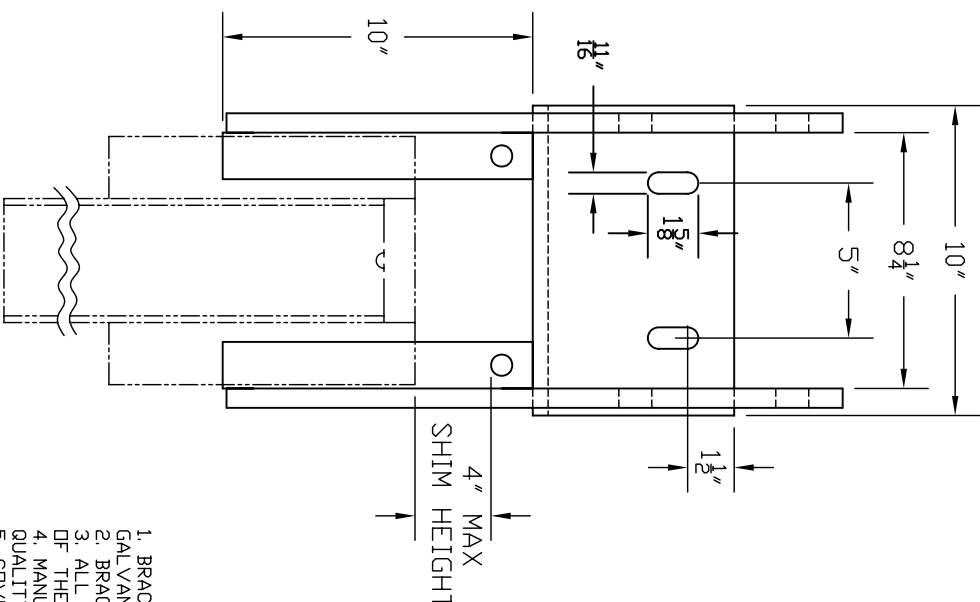
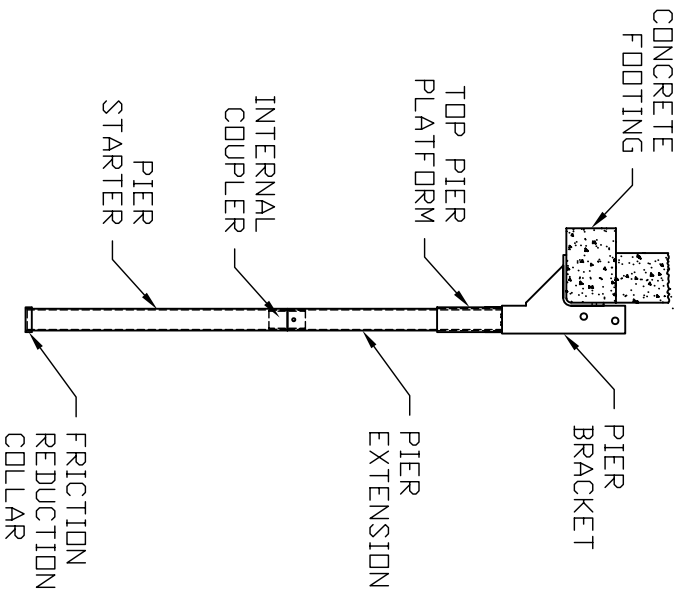


AP-2-UF-B-3500-4000 UNDER FOOTING BRACKET

CATALOG NO: PSA1001N [P] OR PSA1052N [G]



TYPICAL INSTALLATION

-NOTES-

1. BRACKET MATERIAL FINISH AVAILABLE IN PLAIN [P] OR HOT DIP GALVANIZED [G] PER ASTM A153-LATEST REVISION.
2. BRACKET MATERIAL SPECIFICATION PER ASTM A36.
3. ALL WELDING TO BE DONE BY WELDERS CERTIFIED UNDER SECTION 5 OF THE AWS CODE D1.1.
4. MANUFACTURER TO HAVE IN EFFECT INDUSTRY RECOGNIZED WRITTEN QUALITY CONTROL FOR ALL MATERIALS AND MANUFACTURING PROCESSES.
5. COVERED BY PATENT NO. 4,854,782.
6. SEE ICC-ES EVALUATION SERVICE, INC. EVALUATION REPORT NO. NER-579 FOR THE AP-2-UF-B-3500 AND 3500M SYSTEMS.
7. TWO 5/8 DIA PIER PINS (PART# PSA1030) CONFIRMING TO ASTM A29 GRADE 10B21 ARE REQUIRED FOR EACH PIER.
8. LIFT SHIMS (PART# PSA1031 OR PSA1032) SHALL BE USED AS REQUIRED UP TO A MAXIMUM HEIGHT OF 4 INCHES.
9. REFER TO DRAWING SA1002N FOR TOP PIER PLATFORMS.
10. REFER TO DRAWING SA1003 FOR PIER SECTIONS.
11. PATENT PENDING.

AP-2-UF-3500/4000 SYSTEM COMPONENTS

Catalog No.	Pier System	Bracket (Qty)	Top Pier Platform (Qty)	Pier Section (Qty)	Starter Section (Qty)	Plain Pier Sleeve (Qty)	Modified Pier Sleeve (Qty)	Working Capacity (kips)	Ultimate Capacity (kips)
PSA1000N	AP-2-UF-3500.165 [PA] [14'-0"]	1	1	3	1	NA	NA	42.5	85
PSA1051N	AP-2-UF-3500.165 [GA] [14'-0"]	1	1	3	1	NA	NA	42.5	85
PSA1094N	AP-2-UF-3500.165M [PA] [14'-0"]	1	1	3	1	0 ²	1	45.5	91
PSA1104N	AP-2-UF-3500.165M [GA] [14'-0"]	1	1	3	1	NA	NA	45.5	91
PSA1213N	AP-2-UF-4000.219 [P] [14'-0"]	1	1	3	1	NA	NA	49	98
PSA2977N	AP-2-UF-4000.219 [G] [14'-0"]	1	1	3	1	NA	NA	49	98

Notes:
¹ P = Plain Steel, A = Flow Coat Corrosion Protection, G = Hot Dipped Galvanized, M = Modified Pier
² Plain Pier Sleeves are not included in Item Nos: PSA1094N and PSA1104N and are only used if soil conditions warrant

ATLAS*

HUBBELL POWER SYSTEMS

AP-2-UF-B-3500-4000[*]

BRACKET

DO NOT SCALE THIS DRAWING	DWG NO. SA1001N	CMT / PART / ASSY NO. SEE DWG	REV A
	DWN BY SMS	DATE 6/27/07	SHEET 1 OF 1