

# SHAFTSPACER®

DRILLED SHAFT REBAR CENTRALIZER

The original guide and alignment system for lateral positioning of reinforcement cage within caissons, drilled shafts, and other geotechnical construction applications.



## WHY USE IT?

In order to ensure fabricated rebar cages are properly positioned for concrete placement every time. The ShaftSpacer® aligns and centers rebar cages within the drilled shaft — providing proper clearance between the rebar cage reinforcement and the interior side walls of the shaft or casing.



## ADVANTAGES

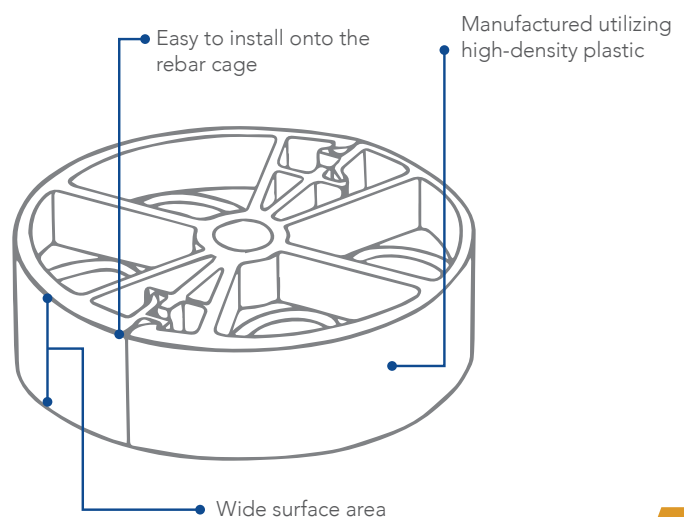
- Saves time & money on site
- Easy to install
- Lightweight, yet strong, durable
- Engineered with the contractor in mind
- Made of high-density plastic, resistant to corrosion, and chemicals common to construction
- Excellent guide system for placement of fabricated rebar cages into drilled or excavated shafts
- Economical with minimal installation costs
- Indefinite shelf-life and easily stored

## CONSTRUCTION BENEFITS

- Ensures the bar reinforcement is properly spaced and aligned within the drilled shaft or excavation
- Provides quality assurance for contractor and/or owner
- Installs quickly and easily, requiring only unskilled labor

## APPLICATIONS

- Bridge Foundations
- Building Foundations
- Retaining Wall Foundations
- Street Light Foundations
- High Mast Foundations
- Transmission Line Foundations
- Sub-station Foundations
- Tower Foundations
- Slurry Walls





ShaftSpacers attached along large-diameter reinforcing cage

## WE'VE GOT YOUR CLEARANCE COVERED.

Foundation Technologies was born on the job site, so we know the value of having the right tools for each job. With a wide range of sizes and one and two-piece configurations, we have the ShaftSpacer® to match the clearance you need.

MODEL	COVER	DIAMETER	BAR SIZE	PACKAGING	WEIGHT
SS303	1.5"	3"	#3 - #6	50	7 lbs
SS505	2.5"	5"	#3 - #6	50	16 lbs
1P505	2.5"	5"	#3 - #7	50	16 lbs
LD406	3"	6"	#3 - #6	50	12 lbs
SS406	3"	6"	#3 - #6	50	24 lbs
1P406	3"	6"	#3 - #7	50	24 lbs
SS808	4"	8"	#3 - #7	25	22 lbs
SS612	6"	10.75"	#3 - #7	24	27 lbs*

\* When shipping UPS/FedEx, use dimensional weight of 50 lbs  
For projects with larger clearance requirements, Foundation Technologies recommends the Hairpin™ Wheel Spacer Extension.

### SHAFTSPACER MINIMUM PLACEMENT RECOMMENDATIONS

- Use one ShaftSpacer per foot (or 304.8mm) of shaft diameter (minimum of four per tier)
- Maximum six (6) foot (or 1.83m) spacing from the top of the shaft
- Maximum two (2) foot (or 0.61m) spacing from the bottom of the shaft
- Maximum eight (8) foot (or 2.44m) interval spacing along the longitudinal axis of the shaft