

SLICKCOAT® SOLAR FRICTION REDUCTION PILE COATING



THE PROBLEM

Frost Heave

What is Frost Heave? Frost heaving is an upwards swelling of soil during freezing conditions caused by an increasing presence of ice as it grows towards the surface, upwards from the depth in the soil where freezing temperatures have penetrated into the soil.

THE SOLUTION

Slickcoat® helps mitigate frost heave on solar panel W piles. It is a simple coating process which provide a slip plane between the W pile and the soil. Once cured, the piles with Slickcoat can be driven in the ground requiring no augering or backfill.

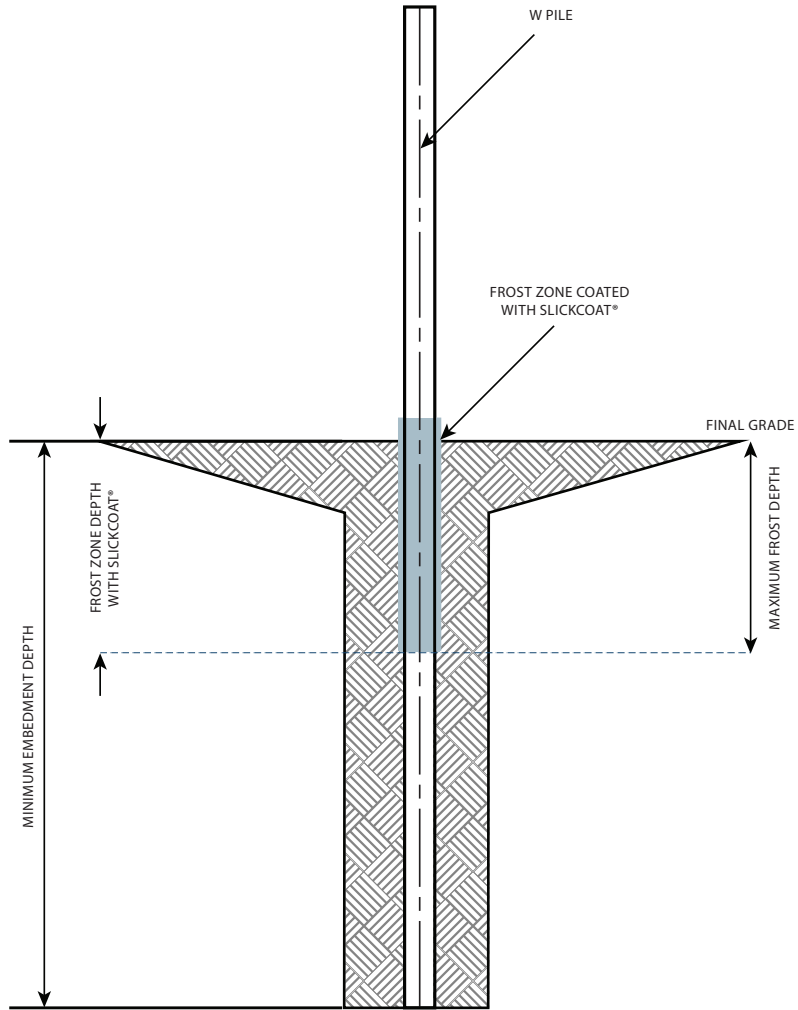
- ✓ Easy Coating Procoess (Sprayed Or Rolled)
- ✓ Abrasion & Corrosion Resistant
- ✓ No Auguring Or Backfill Required
- ✓ Safe & Environmentally Friendly



LET OUR EXPERT STAFF HELP WITH YOUR NEXT
SOLAR PROJECT TAKE OFF OR PLAN DESIGN.

Call today at 866-614-6645 or email casey@foundationtechnologies.com





*PATENTED

Foundation Technologies, Inc.®
 FAMILY OF BRANDS

1400 Progress Industrial Blvd.
 Lawrenceville, GA 30043

866-614-6645
casey@foundationtechnologies.com

